

# MARIOLINA

by e-ggs



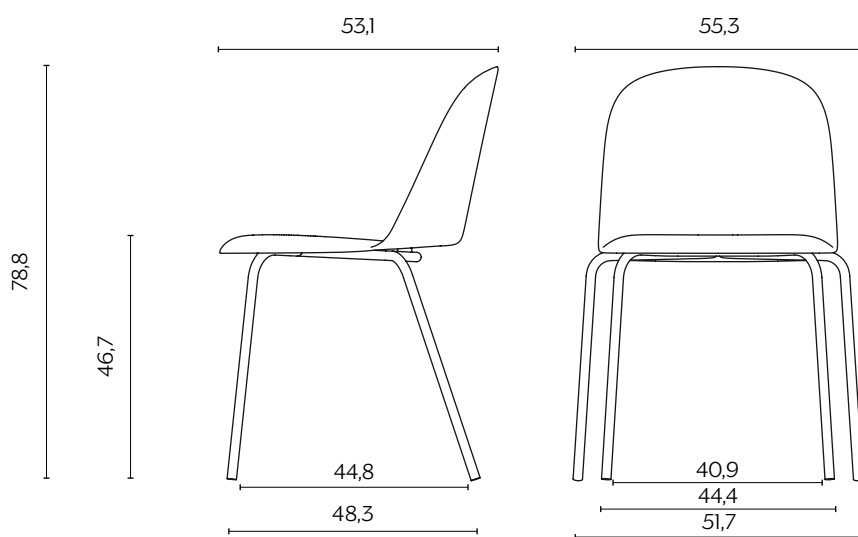
Mariolina è nata esplorando il mondo del polipropilene e i suoi nuovi sviluppi, abbinandosi delicatamente ad una estetica essenziale. La scocca è così semplice che puoi disegnarla senza staccare la penna dal foglio, bilanciando uno stile curato e attento al presente con la volontà di uscire dalle mode. Mariolina è la risposta alla necessità di un prodotto eclettico, realizzato con un metodo produttivo contemporaneo e adatto alla vita di tutti i giorni.

Mariolina came from an exploration into the world of polypropylene and its new developments, combining it with a delicate, honest aesthetic. The body is so simple that it can be drawn without the pen leaving the paper, balancing a careful style, attentive to the present, with the desire to break free of fashion. Mariolina is the answer to the need for an eclectic product, made with a contemporary production method and suitable for everyday life.

## DIMENSIONI | DIMENSIONS

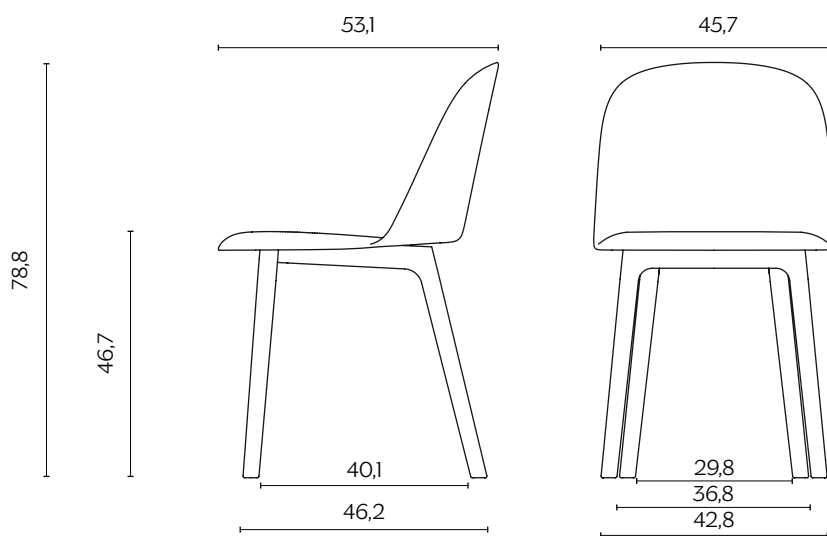
### BASIC | BASIC

lunghezza | width: 55,3 cm  
larghezza | depth: 53,1 cm  
altezza | height: 78,8 cm  
altezza del sedile | seat height: 46,7 cm  
impilabilità | stackability: sì (X4) | yes (X4)



### GAMBE IN LEGNO | WOODEN LEGS

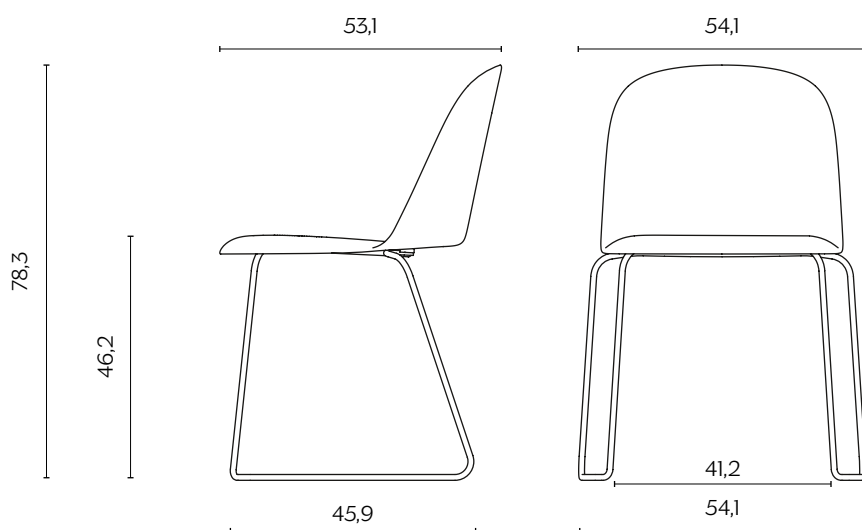
lunghezza | width: 45,7 cm  
larghezza | depth: 53,1 cm  
altezza | height: 78,8 cm  
altezza del sedile | seat height: 46,7 cm



## DIMENSIONI | DIMENSIONS

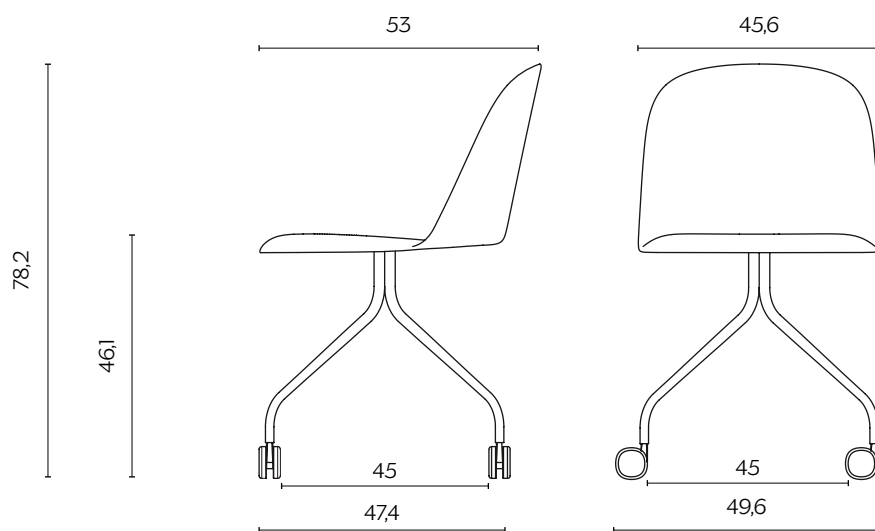
### SLITTA | SLED BASE

lunghezza | width: 54,1 cm  
larghezza | depth: 53,1 cm  
altezza | height: 78,3 cm  
altezza del sedile | seat height: 46,2 cm  
impilabilità | stackability: sì (X4) | yes (X4)



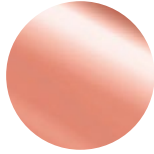
### UFFICIO | OFFICE

lunghezza | width: 45,6 cm  
larghezza | depth: 53 cm  
altezza | height: 78,2 cm  
altezza del sedile | seat height: 46,1 cm

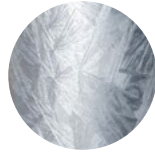


## FINITURE GAMBE | LEGS FINISHES

### METALLO | METAL



Rame  
Copper



Zincato  
Zinc-coated

### LEGNO | WOOD

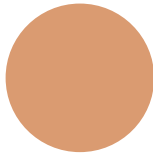


Frassino  
Ash

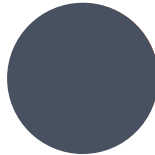


Frassino nero  
Black ash

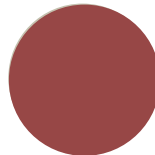
### LACCATO | LACQUER



Albicocca  
NCS S2030-Y40R



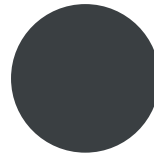
Blu Intenso  
NCS 4550-Y70R



Rosso Marsala  
NCS 6030-B



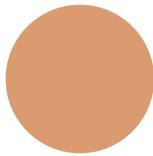
Grigio Seta  
NCS S2502-Y



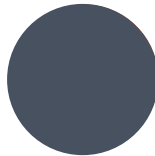
Antracite  
NCS S7005-B20C

## FINITURE STRUTTURA | STRUCTURE FINISHES

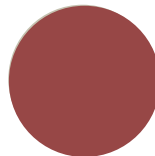
### LACCATO | LACQUER



Albicocca  
NCS S2030-Y40R



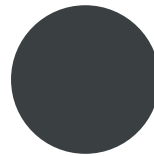
Blu Intenso  
NCS 4550-Y70R



Rosso Marsala  
NCS 6030-B



Grigio Seta  
NCS S2502-Y

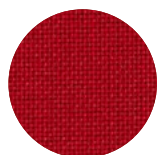


Antracite  
NCS S7005-B20C

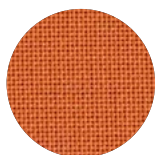
# TESSUTI | FABRICS

A

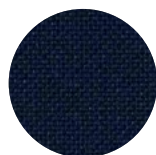
## LOOP



Rosso



Arancione



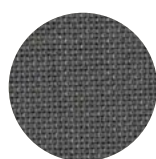
Blu notte



Cioccolato



Burro

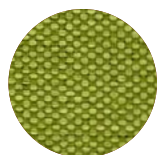


Grigio fumo

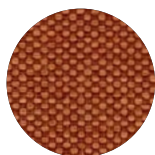


Nero

## TRAMÈ



Mela



Arancio



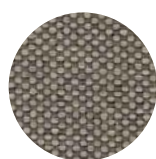
Uva



Nero



Beige



Tortora



Grigio scuro

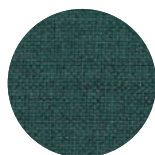
# TESSUTI | FABRICS

A

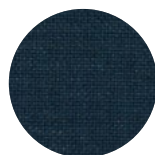
## CANVA



Ciallo



Petrolio



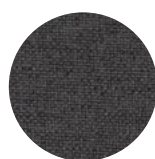
Blu



Sale



Sabbia



Grigio scuro

## PEPLO



Cannella



Rosso mattone



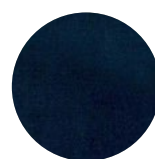
Giallo ocra



Grigio chiaro



Grigio tortora

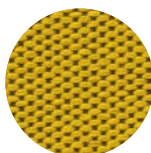


Blu notte

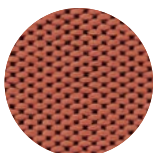
# TESSUTI | FABRICS

B

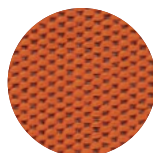
## VESCOM WILSON



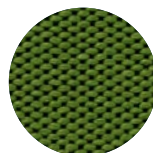
Ciallo elettrico



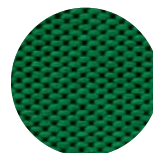
Rosé



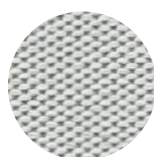
Energico



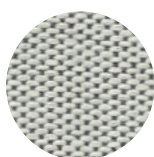
Laguna



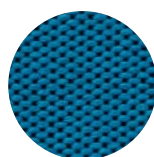
Prato



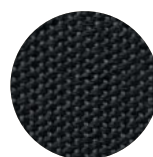
Neve



Sale e pepe



Zaffiro



Crafite

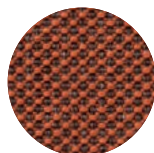
## VESCOM NORFOLK



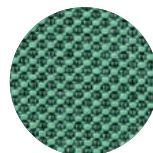
Ape



Rosa



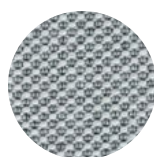
Mattone



Latte e menta



Petrolio



Chiaccio



Sale e pepe



Notte

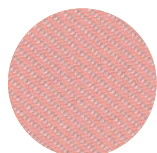


Antracite

# TESSUTI | FABRICS

C

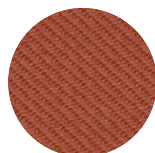
## KVADRAT RELATE



Rosa



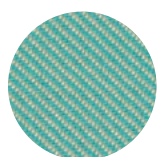
Rosso



Terra



Snack



Menta



Verde bosco

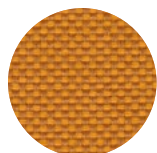


Nuvolo

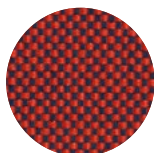


Grigio

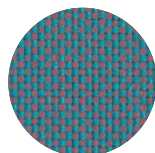
## KVADRAT FIELD 2



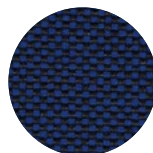
Zafferano



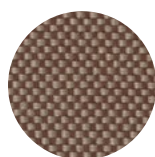
Ciliegia



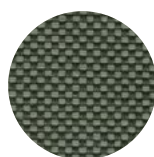
Zucchero



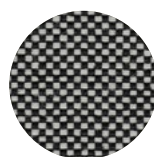
Blu



Nocciola



Menta



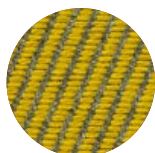
Sale e pepe



# TESSUTI | FABRICS

C

## VESCOM HARDING



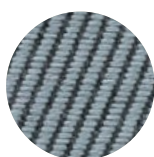
Ciallo



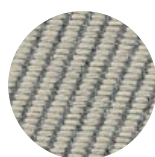
Rosso



Petrolio

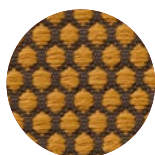


Nuvolo

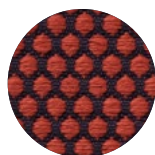


Crigio chiaro

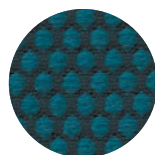
## VESCOM ROLLA



Mostarda



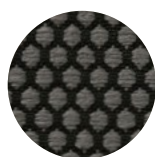
Ciliegia



Blu pavone



Latte



Crafite

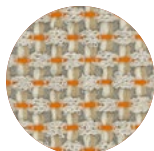


Blu notte

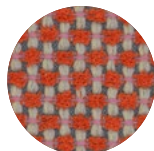
## TESSUTI | FABRICS

C

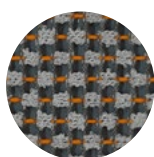
### VESCOM MOORE



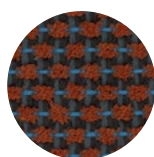
Margherita



Lampone

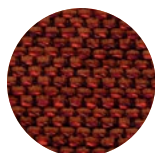


Saetta

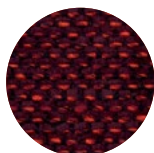


Uva

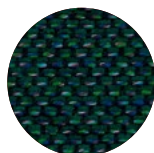
### TORRILANA GUBBIO



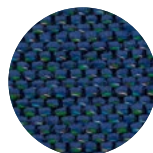
Ambra



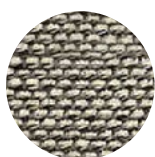
Bordeaux



Verde Petrolio



Blu elettrico



Sale e pepe



Castagna



Tortora

# TESSUTI | FABRICS

C

## BIG BOSS



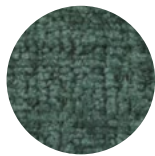
Nuvola



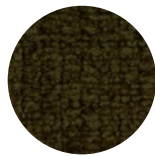
Senape



Nocciola



Turchese

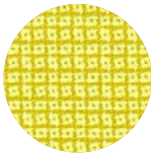


Muschio

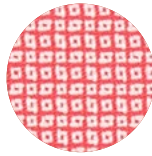


Porpora

## MAHARAM METRIC



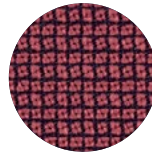
Canary



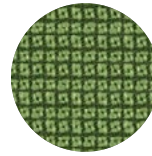
Cala



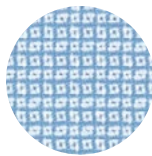
Lava



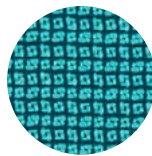
Kiln



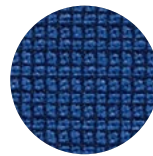
Alligator



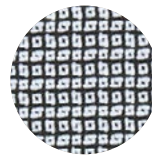
Midday



Talisman



Seaport



Film

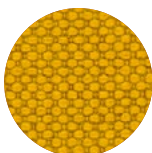
# TESSUTI | FABRICS

D

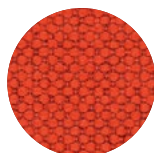
## MAHARAM MERIT



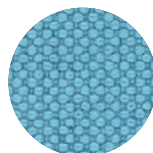
Salmone



Ciallo



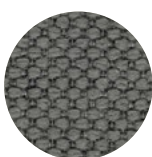
Rosso corallo



Celeste



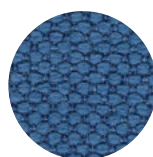
Marrone



Grigio

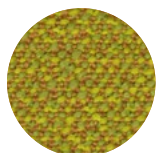


Sale e pepe

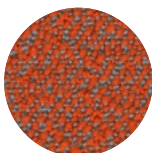


Blu cobalto

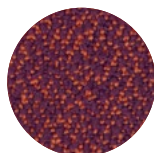
## ROHI SERA



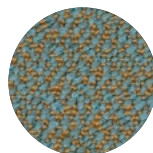
Tivoli



Glow



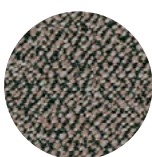
Berry



Mirage



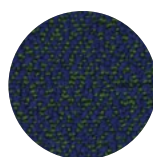
Pepper



Walnut



Rosewood



Mare

# TESSUTI | FABRICS

D

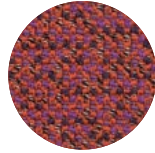
## ROHI MICA



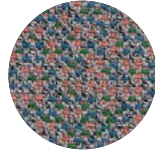
Sanddorn



Indio



Brevia



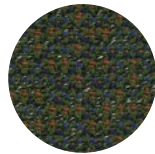
Papillon



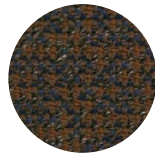
Calla



Crisp



Jungle

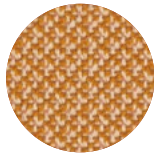


Secret

## ROHI CLEO



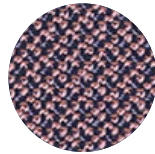
Lemon



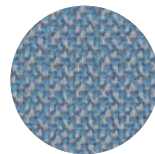
Peach



Flamingo



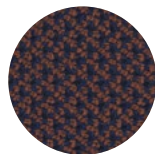
Azalee



Sky



Ocean



Magma



Pepper

## TESSUTI | FABRICS

D

### ERIMITI CLOUD



Panna



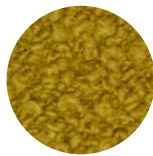
Noce



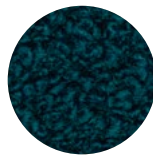
Nocciola



Bordeaux



Senape

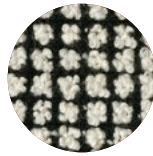


Petrolio



Blu notte

### TORRILANA BRIONNE

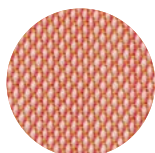


Black and white

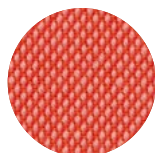
## TESSUTI | FABRICS

E

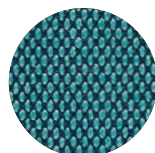
### KVADRAT STEEL CUT TRIO 3



Pesca



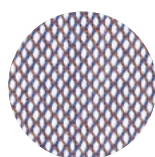
Arancia rossa



Pavone



Sale e pepe



Elettricità

### DEDAR SANSONE



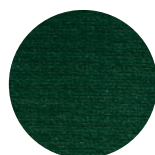
Torunesol



Zucca



Persia



Cactus



Havane



Champagne



Terre d'ombre



Ebano



Encre

## TESSUTI | FABRICS

E

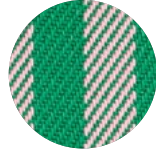
### DEDAR VOULEZ-VOUS



Sambuco



Cirasole



Fragola e menta



Tiramisu



Amarena



Tabacco



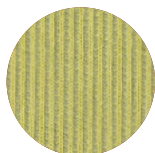
Noce di cocco



# TESSUTI | FABRICS

F

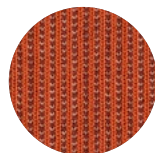
## KVADRAT SUUNTA



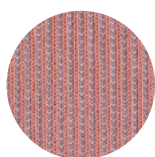
Primavera



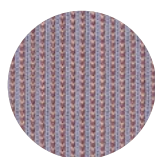
Narcis



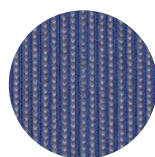
Tulip



Peony

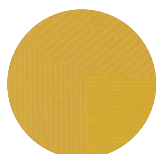


Crocus



Iris

## KVADRAT TERO OUT



Sole



Verde prato



Borgogna



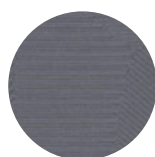
Notte



Panna



Nuvole



Robot

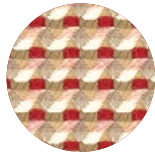


Tabacco

# TESSUTI | FABRICS

F

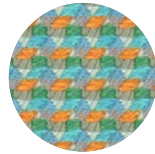
## MAHARAM OXBOW



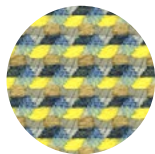
Dianthus



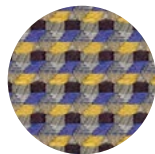
Montage



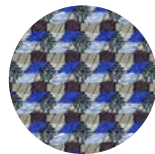
Noveau



Legume

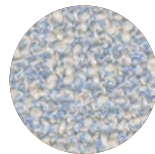


Module

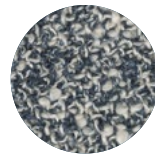


Trope

## SAHCO ZERO



Zucchero



Petrolio

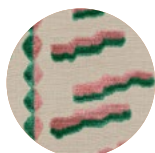


Sale e pepe

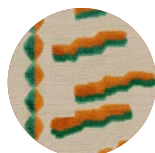
## TESSUTI | FABRICS

C

### DEDAR TIGER BEAT



Fragola menta



Papaya



Fauve



Tabacco



Fumo

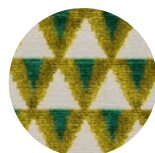
### DEDAR AMULETO



Corallo



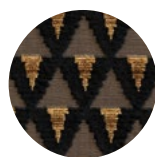
Rubino



Smeraldo



Alabastro



Occhio di tigre