

punt

ART, CRAFT & DESIGN



MAVA

TECHNICAL INFORMATION SHEET

MAVA

BY STEPHANIE JASNY, 2013

punt



PRODUCT TYPE

Chair

Designer Stephanie Jasny drew inspiration for her Mava chair from the wooden clothes pegs of the early 20th century. These archetypal clothes pegs have a groove in the centre that allows them to hold clothes when hanging them out to dry. Similarly, the legs of the Mava chair allude to the concept and are slotted to hold firmly the wide, open backrest that seems to blow in the wind like a piece of cloth.

TIPOLOGÍA DE PRODUCTO

Silla

La diseñadora Stephanie Jasny se inspira en las pinzas de madera de principios del siglo XX a la hora de dar forma a su silla Mava. Estas arquetípicas pinzas cuentan con una ranura en el centro que les permite sujetar la ropa al tenderla. Del mismo modo, las patas de la silla Mava hacen alusión al concepto y se ranuran para sujetar firmemente el respaldo de forma ancha y abierta que parece volar al viento como un trozo de tela.

DETAILS DETALLES



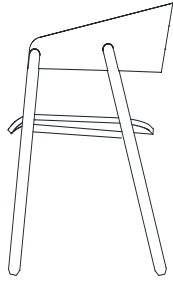
MAVA

BY STEPHANIE JASNY, 2013

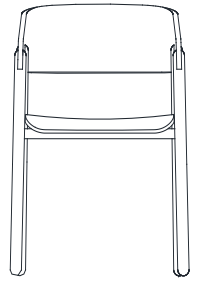
punt

DIMENSIONS DIMENSIONES

MAV100 Wooden seat, backrest and legs. Asiento, respaldo y patas de madera



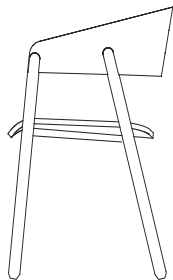
53.4 cm
21 in



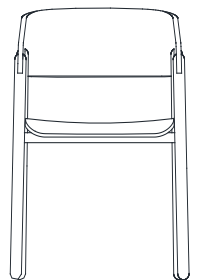
55 cm
21.7 in

76.5 cm
30.1 in

MAV101 Upholstered seat. Asiento tapizado



53.4 cm
21 in

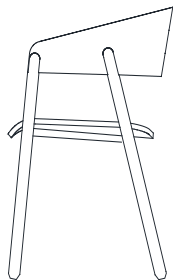


55 cm
21.7 in

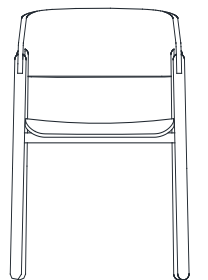
76.5 cm
30.1 in

FABRIC (0.65 x 0.7 m) (INT 25.5" x 27.5")
LEATHER (0.65 x 0.7 m) (INT 25.5" x 27.5")

MAV102 Upholstered seat and backrest. Asiento y respaldo tapizado



53.4 cm
21 in



55 cm
21.7 in

76.5 cm
30.1 in

FABRIC (1.4 x 0.7 m) (INT 55.1" x 27.5")
LEATHER (1.4 x 0.7 m) (INT 55.1" x 27.5")

MATERIALS

Seat.

Curved oak or walnut plywood.

Backrest.

Curved oak or walnut plywood.

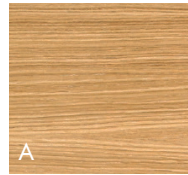
Structure.

Solid oak or walnut.

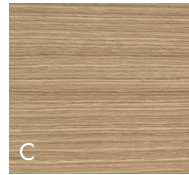
Upholstered.

Optional upholstered seat and backrest, in curved plywood covered with fireproof polyurethane (according to English standards).

Seat, Back & Legs. Asiento, Respaldo y Patas



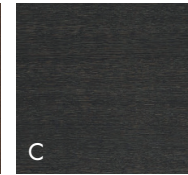
SUPER MATT OAK
ROBLE SÚPER MATE
CHENE SUPERMATE
SUPER MATT EICHE
ROVERE OPACO



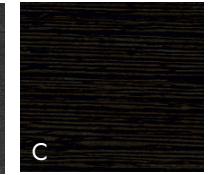
WHITENED OAK
ROBLE BLANQUEADO
CHENE BLANCHI
EICHE WEISS
ROVERE SBIANCATO



WALNUT STAINED OAK
ROBLE TEÑIDO NOGAL
CHENE TEINTÉ NOYER
EICHE NUSSBAUM
GEBEIZT
ROYERE TINTO NOLE



DARK GREY STAINED OAK
ROBLE TEÑIDO GRIS
CHENE TEINTE GRIS
DUNKELGRAU GEBEIZTE
EICHE
ROVERE TINTO GRIGIO
SCURO



EBONY STAINED OAK
ROBLE TEÑIDO ÉBANO
CHENE TEINTÉ ÉBÔNE
EICHE GEBEIZT
EBENHOLZ
ROVERE TINTO ÉBANO

Fabrics G2

MATERIALES

Asiento.

Tablero contrachapado curvado de roble o nogal.

Respaldo.

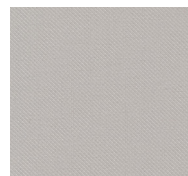
Tablero contrachapado curvado de roble o nogal.

Estructura.

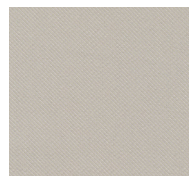
Roble o nogal macizo.

Tapizado.

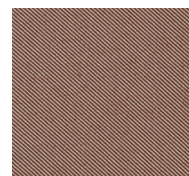
Asiento y respaldo tapizado opcional, en tablero contrachapado curvado revestido de poliuretano ignífugo (según normativa inglesa).



RELATE 101



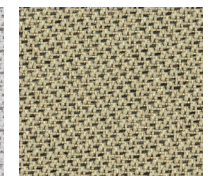
RELATE 201



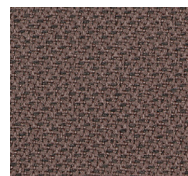
RELATE 341



TONAL 60122



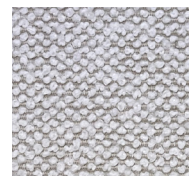
TONAL 61179



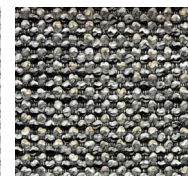
TONAL 64211



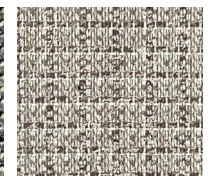
CASERTA 04



CASERTA 15



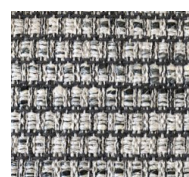
CASERTA 19



BACOLI 04



BACOLI 15



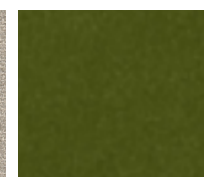
ODDI 09



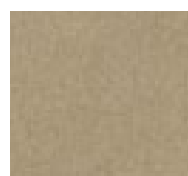
MATIS 05



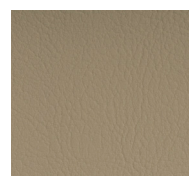
MATIS 07



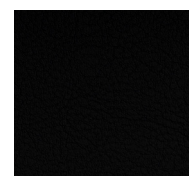
SEVEN 59



SEVEN 05



LEINEN 1049



SCHWARZ 9035

Fabrics G3



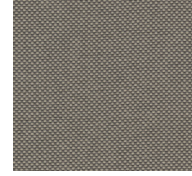
TEMPT 61169



TEMPT 61172



FIELD 232



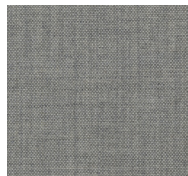
FIELD 242



REMUX 223



REMUX 233



REMUX 123

Fabrics G4



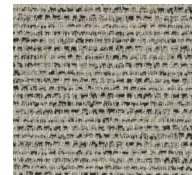
FOCUS 60309



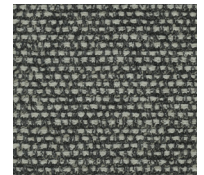
FOCUS 61242



SAVANNA 202

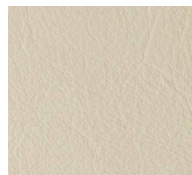


SAVANNA 122

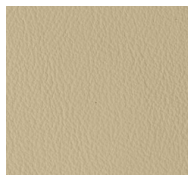


SAVANNA 152

Fabrics G5



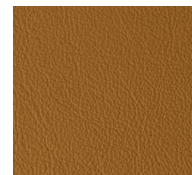
LAGUNA IVORY



LAGUNA SAND



LAGUNA STONE



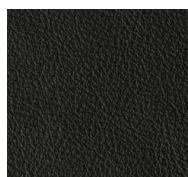
LAGUNA CAMEL



LAGUNA COGNAC



LAGUNA BROWN



LAGUNA BLACK