

**viccarbe**

# Season

---

Designed by Piero Lissoni

Catalogue - EN

V01





## Piero Lissoni

Piero Lissoni has studied Architecture at the Politecnico di Milano and on graduating in 1985, he begins collaborating as designer and Art Director with furniture manufacturers Boffi, Living Divani and Porro.

In 1986 together with Nicoletta Canesi, Piero Lissoni opens the studio Lissoni Associati; in 1996 they create Graph.x to develop graphic projects.

The work of the studio embraces architecture, graphic and industrial design projects, ranging from furniture, accessories, kitchens, bathroom and lighting fixtures to corporate identity, advertising, catalogues and packaging. Interior design projects include hotels, showrooms, trade stands, private houses, shops and yachts.



# SEASON

## Unexpected details

Collection designed by Piero Lissoni, 2011



Designed by Piero Lissoni, the Season collection represents the balance between simplicity and a carefully thought design.

We know that clear and defined forms penetrate the mind faster and longer. This is where we find the real reason for the existence of contemporary design. The modular parts make the work of the interior designer easier. This is so because there is

nothing like having total freedom when it comes to creating a space. There is nothing like playing with the silhouette of different objects, like creating relaxed and flexible environments in which to promote collaboration. Each and every element that makes up the Season family has been born from surprising and unexpected details.

*"The modular parts make the work of the interior designer easier. This is so because there is nothing like having total freedom when it comes to creating a space. There is nothing like playing with the silhouette of different objects, like creating relaxed and flexible environments in which to promote collaboration."*



Picture on this page, overhead view of different configurations of Season Sofa with Season Poufs and Trino low tables



# Season *Chair*

2015 — Any pleasant or unpleasant sensation the human being feels prevents him from concentrating on what he has to do. Lighting, temperature, noise, table height, chair comfort... all these ingredients are part of the equation. A person who is not comfortable in a space will be thinking about the causes of this discomfort rather than the task at hand. The ideal executive office today is a daytime living room, where work can be done under less stress and no distraction.



**With hidden casters**  
*Pure balance and dynamism*

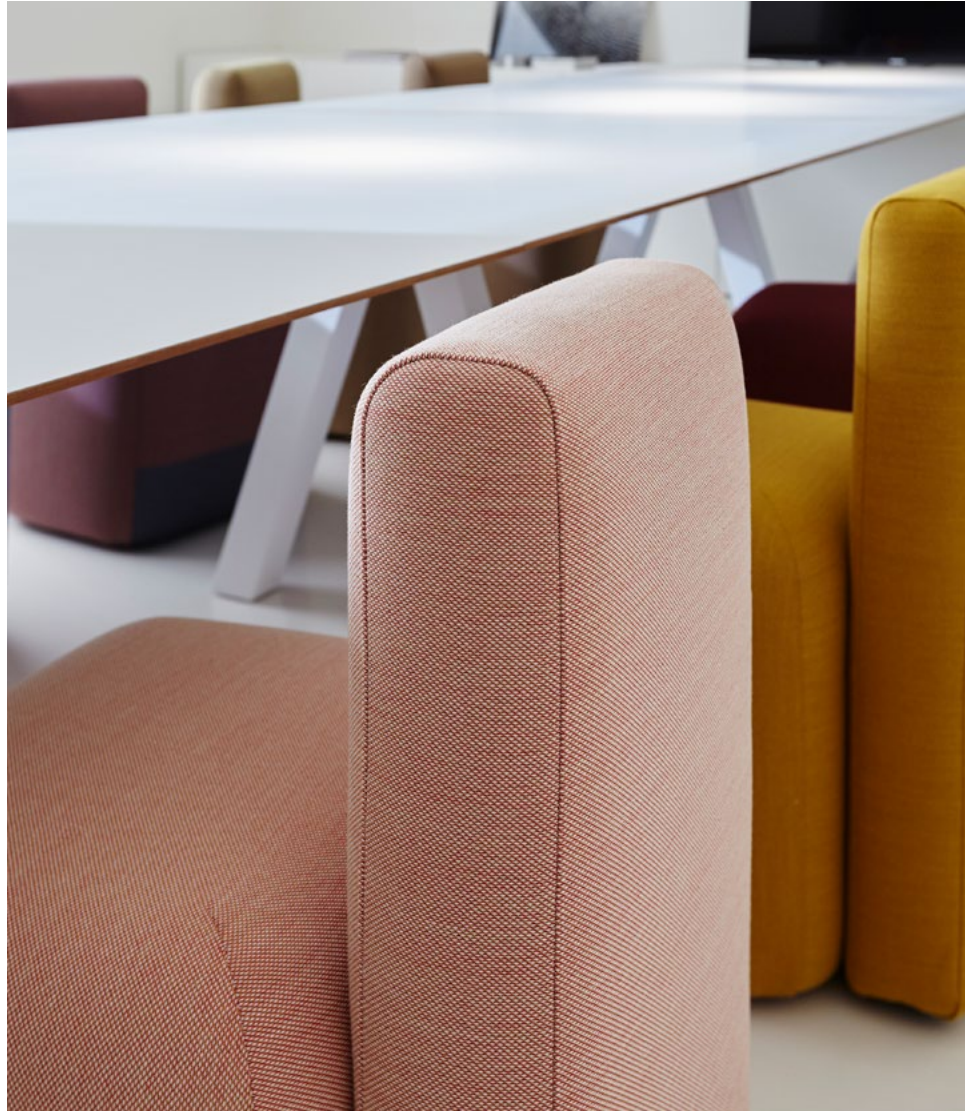


On this page, Trestle in black with Season chairs with casters





The ideal executive office today is a daytime living room



Project below: Newsec Advisory Firm  
Interior Design: lark  
Photography: Niklas Hart





Unique chair with a  
geometric shape designed  
by Piero Lissoni







## Season Chair & Work

*Office* — Season Chair is really amazing thanks to its hidden casters system. Its sinuous silhouette brings great warmth to both contract and residential projects.



Project: Generali Offices, Italy  
Interior Design: mpengineering  
Agency: Entis. Pictures: Lea Anouchinsky





Project: La Salita Restaurant, Spain.  
Interior Design: Silvia Bellot para Mediterranean Nomad.  
Photography: Javier Diez





Project: Turqueta Restaurant, Spain.  
By Tarruella Trenchs Studio  
Photography: Ángel Segura



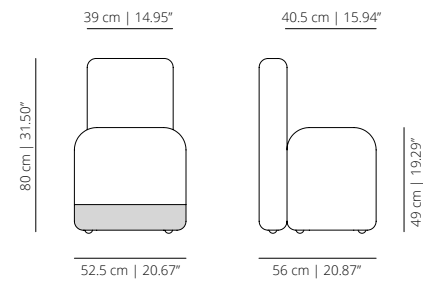
Project: Vivood Landscape Hotel, Spain.  
Photography: Ángel Segura



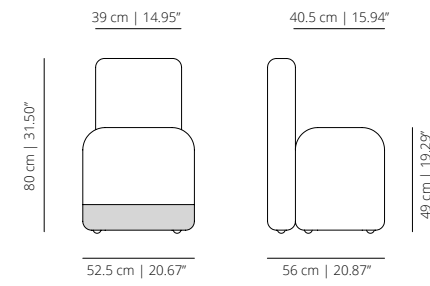
**viccarbe**



**SECHF**  
fix



**SECH**  
with casters

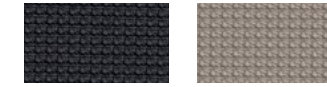


**FINISHES**

**Upholstery**

Check upholstery samples.

**Strap (technical fabric)**



dark grey

light grey

**TECHNICAL INFO**

Interior structure in solid wood and perforated top of microparticles low in formaldehyde. We use PEFC certified wood. Expanded polyurethane foam in different densities. Fabric or leather. Upholstery protection (technical fabric, grey). Hidden casters.

**CERTIFICATIONS**

ANSI BIFMA X5.4:2012 y UNE EN 16139:13 vc2015 (only without casters).  
ANSI BIFMA x5.1:2011 (only with casters)



## Let's talk

*We want to help you find the best designs for your project. Get in touch and our team will get back to you as soon as possible.*

+ CONTACT US