

## Frame aluminium table 160x90x74

by Ramón Esteve

Frame, outdoor collection by Ramon Esteve, comes from generating serene and timeless shapes using the framework as elementary geometry. The endless possibilities offered by the material using advanced technology, was the motivation to explore the limits.



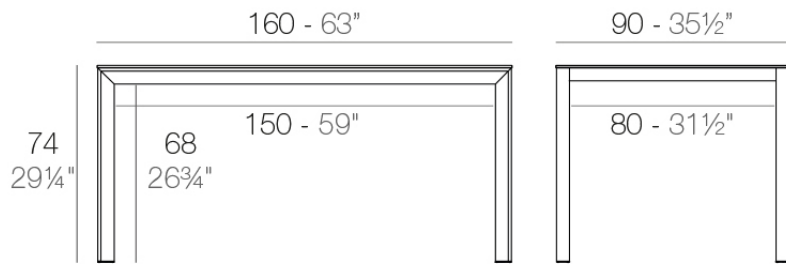
## Info

---

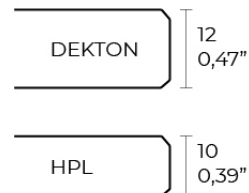
### Description

Extruded aluminum with cast lacquered aluminum base. HPL Table top ó Dekton Table top. Item suitable for indoor and outdoor use. HPL Table top.

Weight: 30.13 Kg



FRAME Mesa 160x90cm  
FRAME Dining Table 63"x35 1/2"



## Finishes

---

### finishes

---

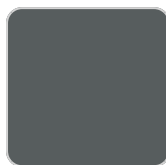
ALUMINIUM  
Ref. 54238FM



white



british gray



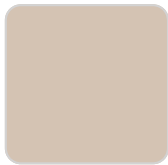
traffic gray



black



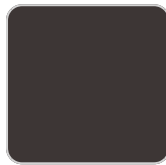
ecru



crema



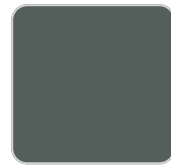
castoro fiber



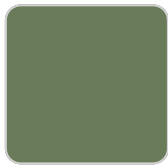
cacao



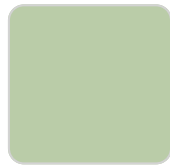
notte blue



modo green



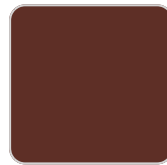
pickle



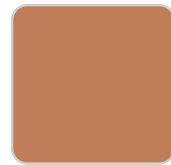
almond



red



purjai red



melon



mostaza

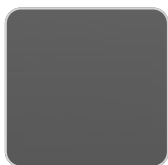
Lacquered aluminium profile.

### tabletops

---

HPL  
Ref. VVAR02581

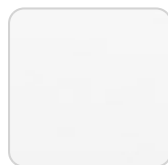
# VONDOM



black(black edge)



ecru(black edge)



white(black edge)

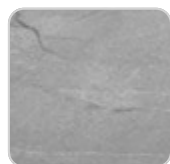
HPL black edge

Solid Core

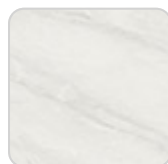
Ref. VVAR02582



modo green



yule gray



gioia bianco



purjai red



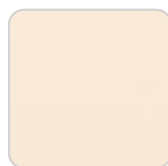
british gray



notte blue



traffic gray



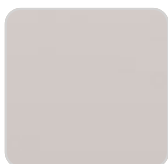
crema



yule brown



castoro fiber



piombo gray



pulpis gray



cacao



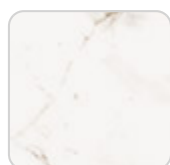
kandia black

Dekton

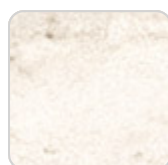
Ref. VVAR02835



kelya



entzo



danae

## Ambients

---

