

Vases table 210x100x73

by JM Ferrero

VASES Collection, is made up of flowerpots, furniture and lighting designed by the Valencian designer JM Ferrero. It's shapes were inspired by diamond cutting, producing pieces of clear-cut shapes and great style, creating a big visual impact.

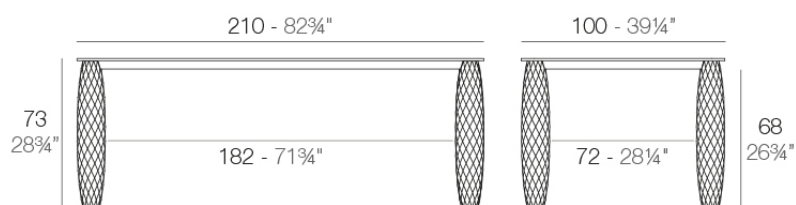


Info

Description

Made of polyethylene resin by rotational moulding. 100% Recyclable. Item suitable for indoor and outdoor use. Available in different finishes.

Weight: 54.31 Kg



VASES Mesa 210x100
VASES Dinning Table 82 3/4"x39 1/4"

Finishes

finishes

LACQUERED

Ref. 47079F



notte blue



crema



modo green



purjai red



orange



white



black



bronze



steel



anthracite



champany



red



khaki



taupe



ecru



beige

Lacquered Polyethylene

tabletops

HPL

Ref. 47079

VONDOM



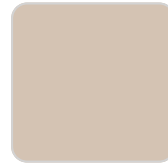
orange



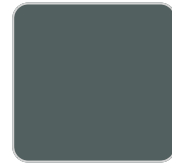
ice



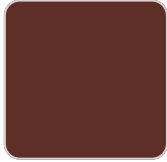
notte blue



crema



green



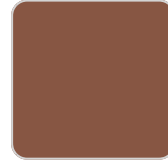
purjai red



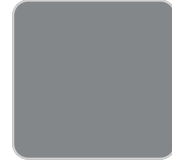
white



black



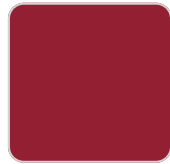
bronze



steel



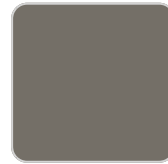
anthracite



red



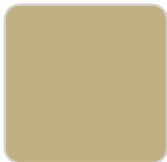
khaki



taupe



ecru



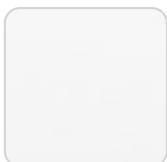
beige

HPL black edge

tabletops

HPL

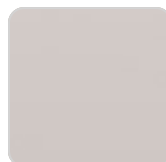
Ref. VVAR00817



white



black



ecru

HPL black edge

Ambients

